



📍 10 Cedar Close, Worton, Devizes, Wiltshire, SN10 5SD

🏠 Offers In The Region Of £525,000

A wonderfully well proportioned family home set in the highly regarded Wiltshire village of Worton.

- No Onward Chain
- Four Double Bedrooms
- Principal Bedroom with Dressing Room & En Suite
- Three Reception Rooms
- Stylish Refitted Kitchen
- Contemporary Family Bathroom
- Double Garage & Private Parking
- Fully Enclosed Rear Garden
- Popular Village with Good Primary School

🏡 Freehold

🏠 EPC Rating E



A delightful 4-bedroom spacious detached family home set in an established cul-de-sac in the sought after village of Worton, offered with no onward chain.

A large entrance hallway with downstairs W/C, has double doors opening to the left into a 19ft x 15ft reception room twin bay windows. To the right, a flexible dual aspect dining / family room is ideal for either entertaining friends or for the kids to have their own break out space. The kitchen is open plan into a separate breakfast room offering a range of wall and floor-mounted units, space for appliances, and access in to a utility room. A door leads from the utility room goes into the integral double garage.

On the first floor, there are 4-double bedrooms. Bedrooms 1, 2 and 3 benefit from built-in wardrobes. The principal bedroom, extending over the garage, is a standout feature, with a walk-in dressing room as well as a modern updated en-suite bathroom. A contemporary refitted family bathroom completes the internal accommodation.

Externally, alongside the double garage there is driveway parking for 2 cars. The property sits on a good sized corner plot and has a fully enclosed easily maintainable garden with an extended patio sun terrace, lawn and established borders.

Situation

The charming village of Worton has a public house, a primary school and a Church. There are also some delightful countryside walks, with a bridleway taking you through to the village of Marston. A large array of amenities including shops, supermarkets, banks, building societies, bars and restaurants can be found at nearby Devizes which is approximately 4 miles away. There is also a thriving weekly market and regular farmers market. The historic cities of Bath and Salisbury are less than 25 miles away. The Pewsey Vale, Stonehenge and the village of Avebury are all within approximately 20 minutes drive. Mainline railway links run from nearby Chippenham, Westbury and Pewsey to London, and the M4 motorway is easily accessible. There is an excellent selection of schools, at both primary and secondary levels. Successful schools in the state and private sectors include: Dauntsey's, Marlborough College, Stonar and St Mary's.

Property Information

Services: Oil fired central heating. We are advised all other mains services are connected.

Council Tax Band: F



Cedar Close, Worton, Devizes, SN10

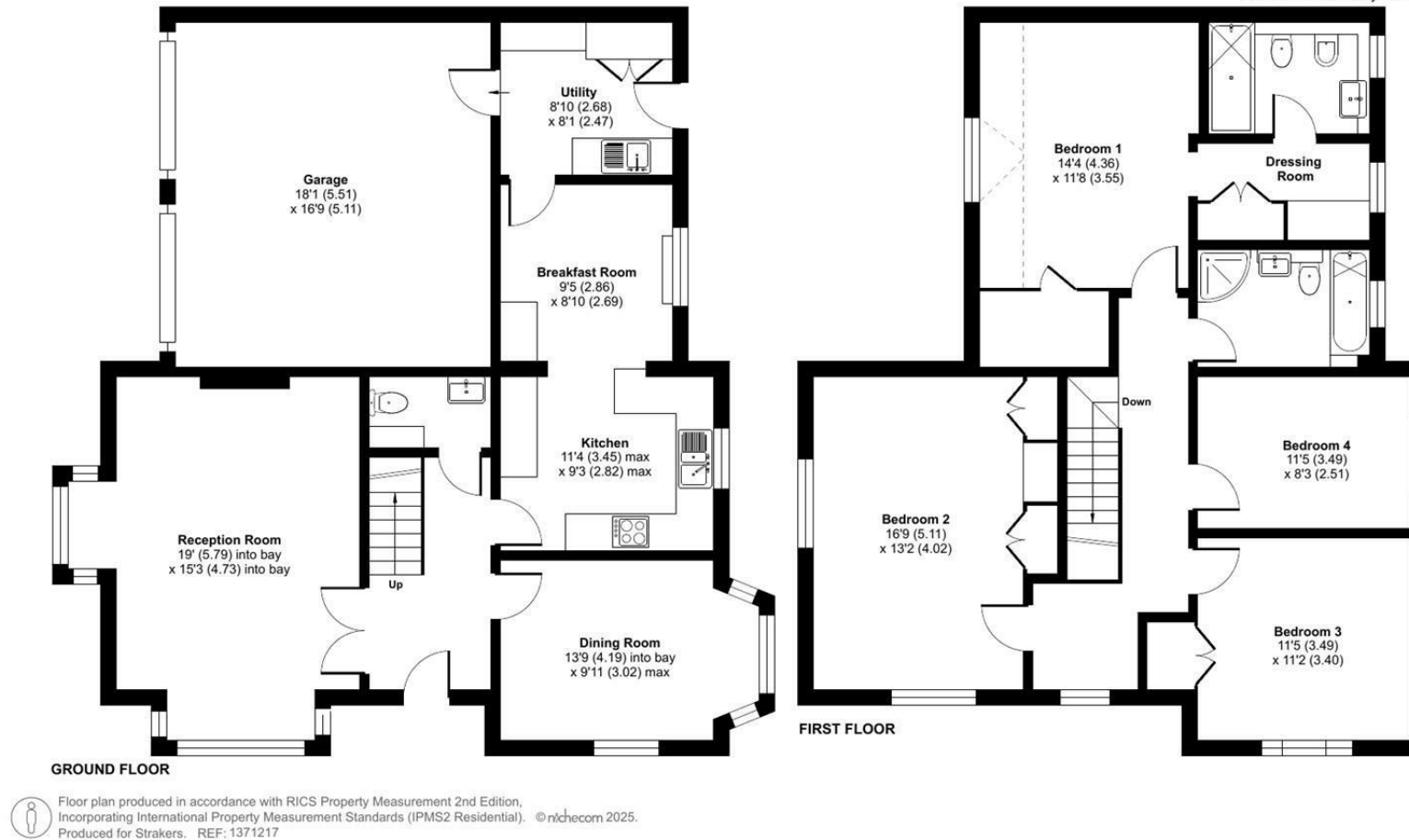
Approximate Area = 1699 sq ft / 157.8 sq m

Limited Use Area(s) = 27 sq ft / 2.5 sq m

Garage = 307 sq ft / 28.5 sq m

Total = 2033 sq ft / 188.8 sq m

For identification only - Not to scale



Disclaimer These particulars, whilst believed to be accurate are set out as a general outline only for guidance and do not constitute any part of an offer or contract. Intending purchasers should not rely on them as statements of representation of fact, but must satisfy themselves by inspection or otherwise as to their accuracy. No person in this firm's employment has the authority to make or give any representation or warranty in respect of the property. All measurements and distances are approximate only. Your home is at risk if you do not keep up repayments on a mortgage or other loan secured on it.